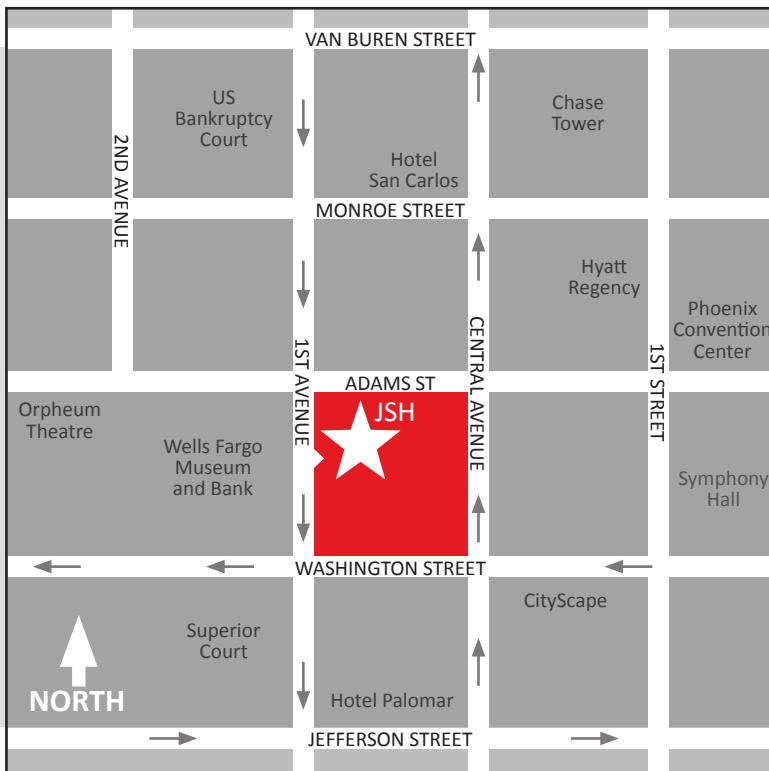
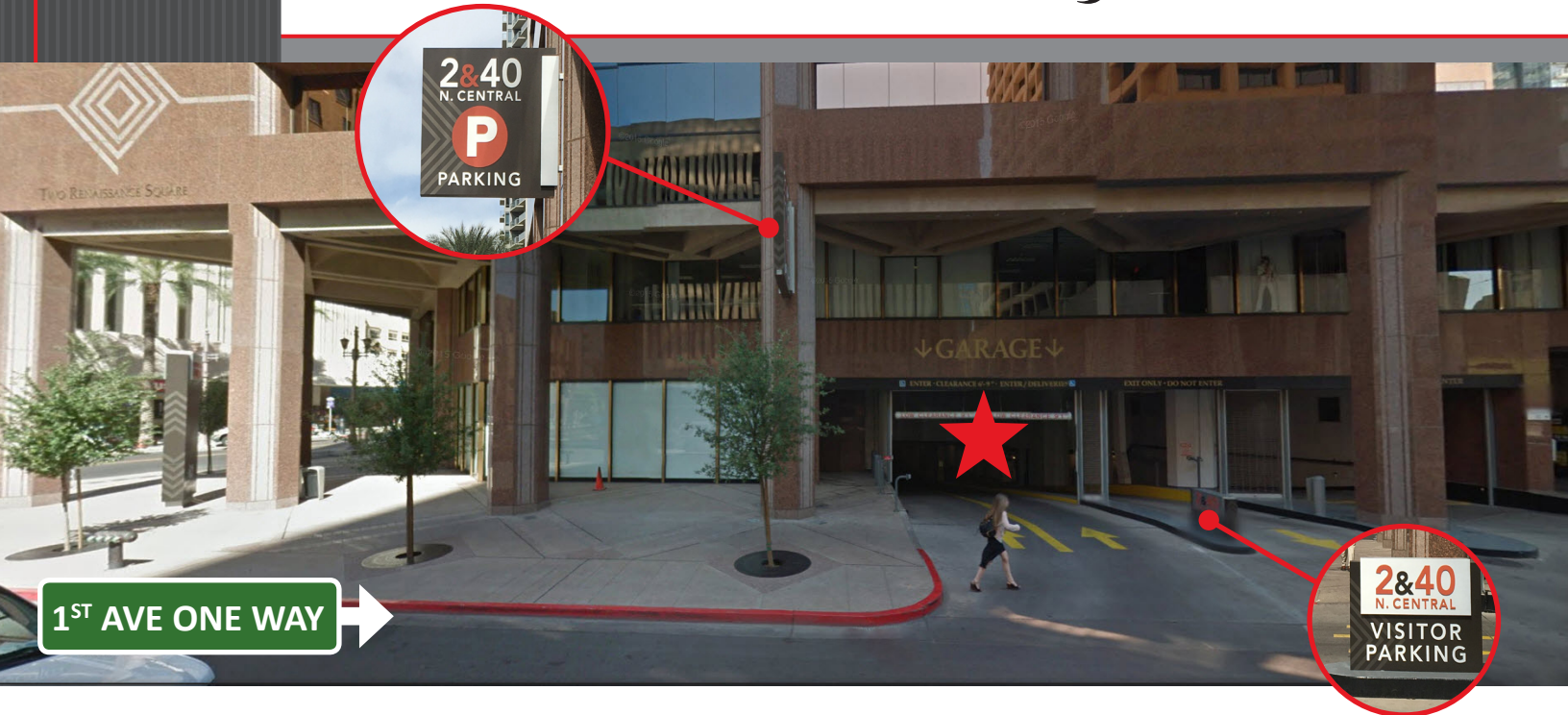


PARKING MAP & DIRECTIONS TO 40 NORTH CENTRAL AVE • SUITE 2700

JSH JONES,
SKELTON &
HOCHULI, P.L.C.



TWO RENAISSANCE SQUARE 40 NORTH CENTRAL AVENUE

Traveling south on 1st Ave (one way, south), cross Adams St and make an immediate left into the underground parking garage of the **Two Renaissance Square tower** (see red star).

Visitor parking is available on level **G1** in the underground garage. Once parked, take the elevator to the **L (Lobby)** level. Once you are on the Lobby level look for the elevator sign marked **(Floors 15 - 28) sign below**. Take those elevators to the **27th Floor**, where our lobby is located. Remember to bring your ticket to our reception desk for validation.



Renaissance Square is a high-rise complex located in downtown Phoenix, Arizona. The complex includes two towers which are connected by a hallway on the street level, as well as a skyway positioned halfway up the structures. Located near CityScape, Talking Stick Arena and the Superior and Federal Court Houses, the exterior of the buildings is polished carmine red granite and glass. The exterior is sculpted diagonally, giving the illusions of overlapping towers. The complex is located between Central Ave and 1st Ave, and Washington St and Adams St. Please note: vehicle clearance is 6' 9" inside the parking garage. Public metered spaces are available on most nearby streets.